

## TECHNICAL SPECIFICATIONS :

Cat. No.	<b>XBS QHM-DIN</b>
Supply type	AC Model
Supply Voltage	90-264 VAC / 270-460 VAC
Frequency	50 / 60 Hz
Over Voltage protection	NA
Reverse polarity protection	NA
Power Consumption	1VA (Max)
Register	6 Digit (3.6mm)
Read Out	99999.9
Least Count	0.1 Hrs
Accuracy	±0.02% over entire range
Weight	70 gms (approx)
Operating Temperature	-5°C to 55°C
Storage Temperature	-20°C to 70°C
Humidity (Not-condensive)	5 to 95%
Mounting	Base / Din rail
Enclosure	Flame Retardant UL94V0
Approvals	CE & RoHS compliant
Degree of Protection	IP20 for Terminals and IP40 for Enclosure
Dimensions (W X H X D)	36 X 60 X 100 mm

### Compliance

ESD Immunity	IEC 61000-4-2 Level II
Radiated Susceptibility	IEC 61000-4-3 Level III
Electrical Fast Transients	IEC 61000-4-4 Level IV (AC) / II (DC)
Surge Immunity	IEC 61000-4-5 Level II
Conducted Susceptibility	IEC 61000-4-6 Level III
Voltage Dips (AC)	IEC 61000-4-11 Class A
Voltage Dips (DC) Level 1	IEC 61000-4-29 Class A
Conducted & Radiated Emission	CISPR 14-1 Class A
HV Test (All terminals & enclosure)	IEC 60255-5-1 4KV
Single Fault	IEC 61010-1
Insulation Resistance	UL 508 >50K Ohm
Leakage Current	UL 508 <3.5 mA
Cold Heat	IEC 60068-2-1
Dry Heat	IEC 60068-2-2
Vibration	IEC 60068-2-6 5g, 10-55 Hz
Shock	IEC 60068-2-27 40g, 6 ms

Cat. No.:  
XBS QHM-DIN



### Features:-

1. Robust Design.
2. Frequency independent for AC applications.
3. High degree of accuracy.
4. Available wide supply range of 90 to 460 VAC & 10 to 80 VDC
5. Wide temperature range from -5 to 55°C.
6. Suitable for control panel applications.



### Notes:-

- Product innovation being a continuous process, we reserve the right to alter specifications without any prior notice.
- User is recommended to ensure the suitability of the product for the intended application.

### ⚠ Caution:-

- Always follow instructions stated in this leaflet.
- Before installation, ensure that the specifications agree with the intended application.
- Installation must be done by skilled electrician.
- Automation and control devices must be installed properly so that they are protected against involuntary actuations.
- Suitable dampers should be provided in the event of excessive vibrations.
- Wrong connection may cause product damage

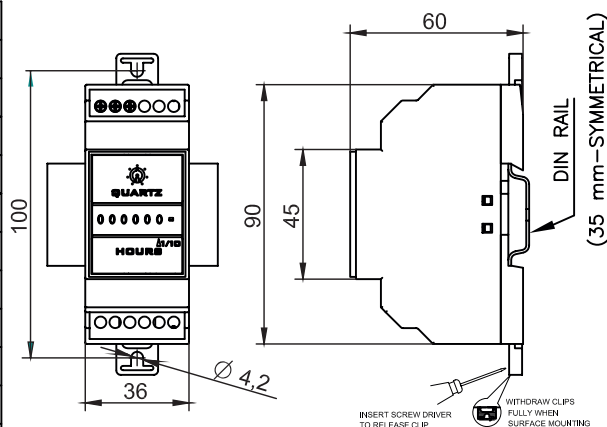
### Terminal Details:--

 Ø3.5...4.0 mm	0.54 N.m (5 Lb.in) Terminal screw- M2.6
	1 x 0.2...3.3 mm <sup>2</sup> Solid Wire / Single Wire Ferrule
AWG	1 x 24 to 12

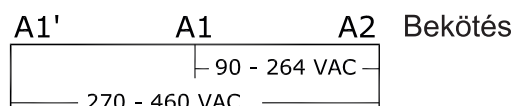
Use Cu wire of 60/75°C only.

### Méreték és felszerelés

### OVERALL DIMENSIONS & MOUNTING DETAIL .



### Connection diagram for AC model



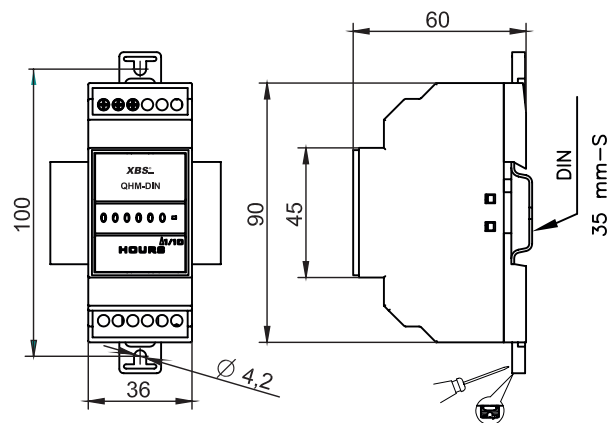
## Technické parametre:

Typ:	XBS QHM-DIN
Napätie:	AC Model
Menovité napätie:	90-264 VAC / 270-460 VAC
Frekvencia	50 / 60 Hz
Spotreba	1VA (Max)
Displej:	6 Digit (3,6mm)
Stupnica:	99999,9
najmenšia meraná hodnota	0,1 Hrs
presnosť:	±0,02% az egész méréstartományban
Váha	70 gm
Prevádzková teplota	-5°C...+55°C
Skladovacie teplota	-20°C...+70°C
vlhkosť	5...95%
Montáž	DIN lista
Obal	UL94V0 Samozhášavý
certifikát	CE & RoHS
Krytie	IP20 I, IP40 v krabici
Rozmer	36 X 60 X 100 mm

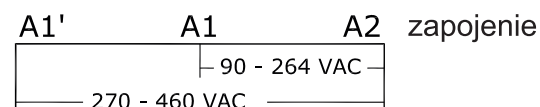
## certifikáty

ESD Immunity	IEC 61000-4-2 Level II
Radiated Susceptibility	IEC 61000-4-3 Level III
Electrical Fast Transients	IEC 61000-4-4 Level IV (AC) / II (DC)
Surge Immunity	IEC 61000-4-5 Level II
Conducted Susceptibility	IEC 61000-4-6 Level III
Voltage Dips (AC)	IEC 61000-4-11 Class A
Voltage Dips (DC) Level 1	IEC 61000-4-29 Class A
Conducted & Radiated Emission	CISPR 14-1 Class A
HV Test (All terminals & enclosure)	IEC 60255-5-1 4KV
Single Fault	IEC 61010-1
Insulation Resistance	UL 508 >50K Ohm
Leakage Current	UL 508 <3.5 mA
Cold Heat	IEC 60068-2-1
Dry Heat	IEC 60068-2-2
Vibration	IEC 60068-2-6 5g, 10-55 Hz
Shock	IEC 60068-2-27 40g, 6 ms



## Rozmery



## Schéma zapojenia



## Vlastnosti

 Ø3.5...4.0 mm	0.54 N.m (5 Lb.in) Matica M2.6
	1 x 0.2...3.3 mm <sup>2</sup> pevný vodič
AWG	1 x 24 to 12

Importőr/importer:  
Mixvill Kft. 4002 Debrecen, Ragoda dűlű 3. HUNGARY  
Tel.: +36 52/533-300, Fax: +36 52/533-301  
E-mail: mixvill@mixvill.hu, www.mixvill.hu  
Szűrmazási hely: India Made in India



# XBS®

## QHM-DIN

1. Robustná konštrukcia
2. Hodnotu, ak je podávaná zároveň s frekvenciou AC 50-60Hz
3. vysoká presnosť
4. Široký rozsah napájacieho napätia: 90 až 460 VAC a 10-80VDC
5. Široký teplotný rozsah: -5 ... +55 ° C
6. Rozvádzač montáž

## Komentáre:

- Vývoj produktu prebieha, môžu byť zmenené bez predchádzajúceho upozornenia.
- Užívateľ by mal vždy skontrolovať vhodnosť nástroje k úlohe.

## Upozornenie:

- 1) Napätie, nedotýkajte konektorov.
- 2) zodpovedajúce uťahovací moment skrutiek.
- 3) Vždy postupujte podľa pokynov v užívateľskej príručke.
- 4) Pred inštaláciou sa uistite, že ste splnili podmienky požadované pre projekt.
- 5) Inštalácia musí byť vykonaná iba kvalifikovaný elektrikárom
- 6) Extrémne tlmenie vibrácií sa odporúča v prípade potreby.